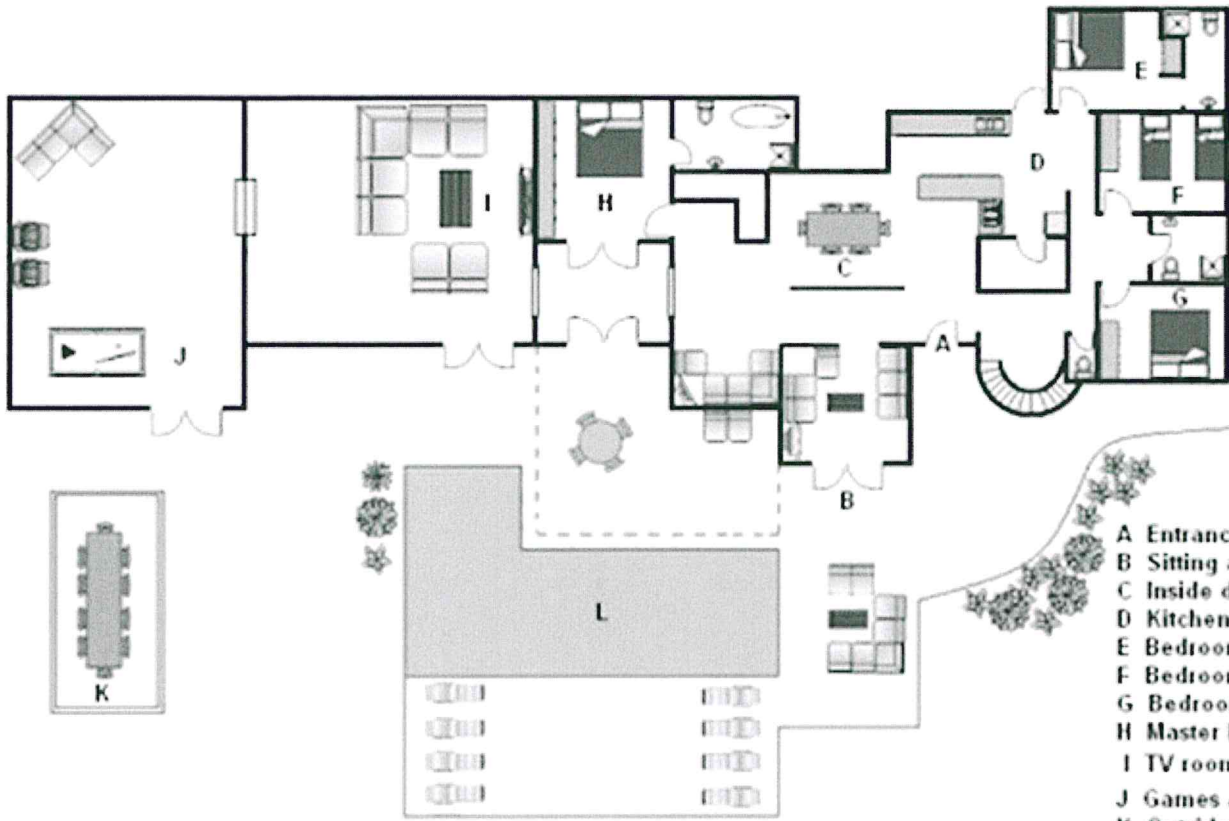
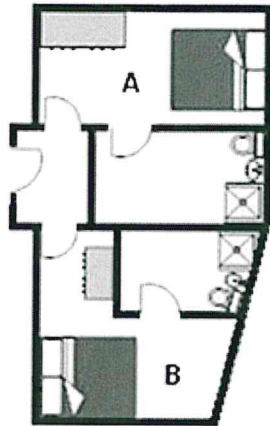


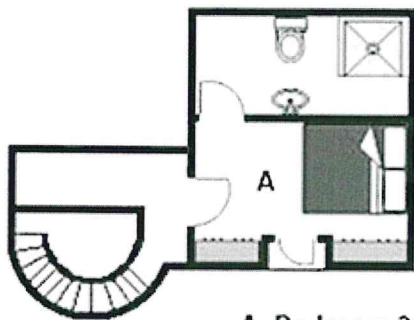
- A Main villa
- B Pool
- C Guest rooms



- A Entrance
- B Sitting area - $8m^2$
- C Inside dining - $16m^2$
- D Kitchen - $12m^2$
- E Bedroom 5 - $8m^2$
- F Bedroom 4 - $10m^2$
- G Bedroom 3 - $9m^2$
- H Master bedroom - $15m^2$
- I TV room - $25m^2$
- J Games area - $24m^2$
- K Outside dining
- L Pool



A Bedroom 6 - 12m²
B Bedroom 7 - 15m²



- UPSTAIRS

A Bedroom 2 - 12m²